

VOLVO PENTA

MD 6A



Volvo Penta MD6A is a new compact marine diesel engine which is ideal from an installation and servicing point of view. The compact outer dimensions make the engine specially suitable as an auxiliary unit in medium size sailing crafts and for installation in small pleasure and work boats of the displacement type.

The two-cylinder four-stroke engine is fully balanced dynamically and this ensures smooth and vibration-free running. The MD 6 has direct injection, which makes for good cold starting and low fuel consumption – at full output it uses up only about 2 quarts of fuel per hour of operation.

The compact reverse gear type Mono Shift is designed on the well-known cone clutch in the Aquamatic drive and is particularly easy to manoeuvre. All operation of both the engine speed and reverse gear is done with a single control lever.

The engine is supplied with the following alternative equipment:

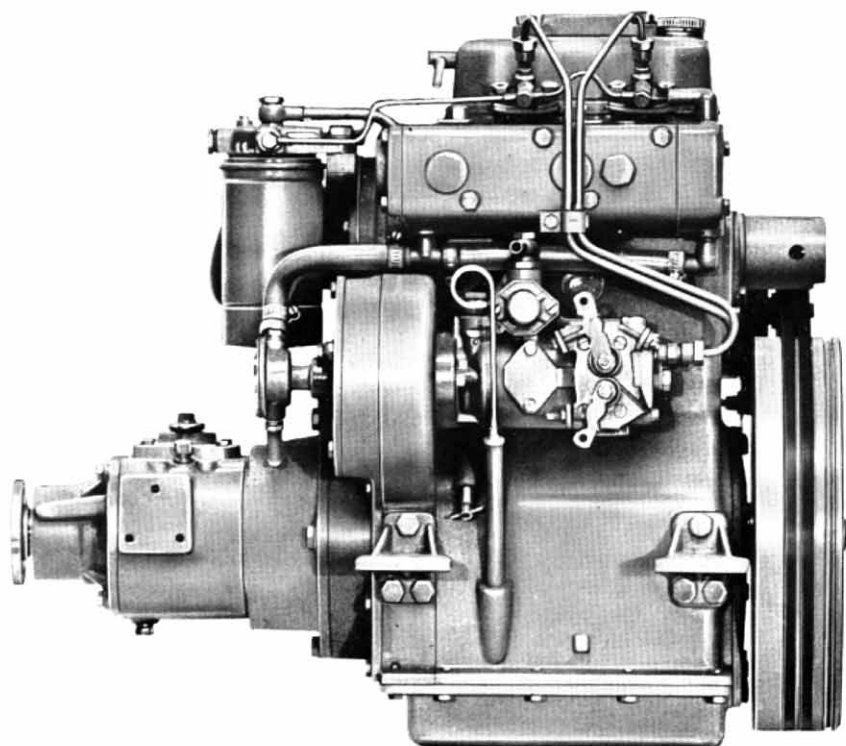
1. With starter-generator and reverse gear type MS, ratio 1:1.
2. With starter-generator and reduction-reverse gear type MS, ratio 1.91:1.
3. With starter-generator and reversing mechanism type Combi, ratio 1.42:1, complete with propeller equipment and 2-blade, adjustable propeller.

Other technical advantages which are characteristic for the Volvo Penta MD 6:

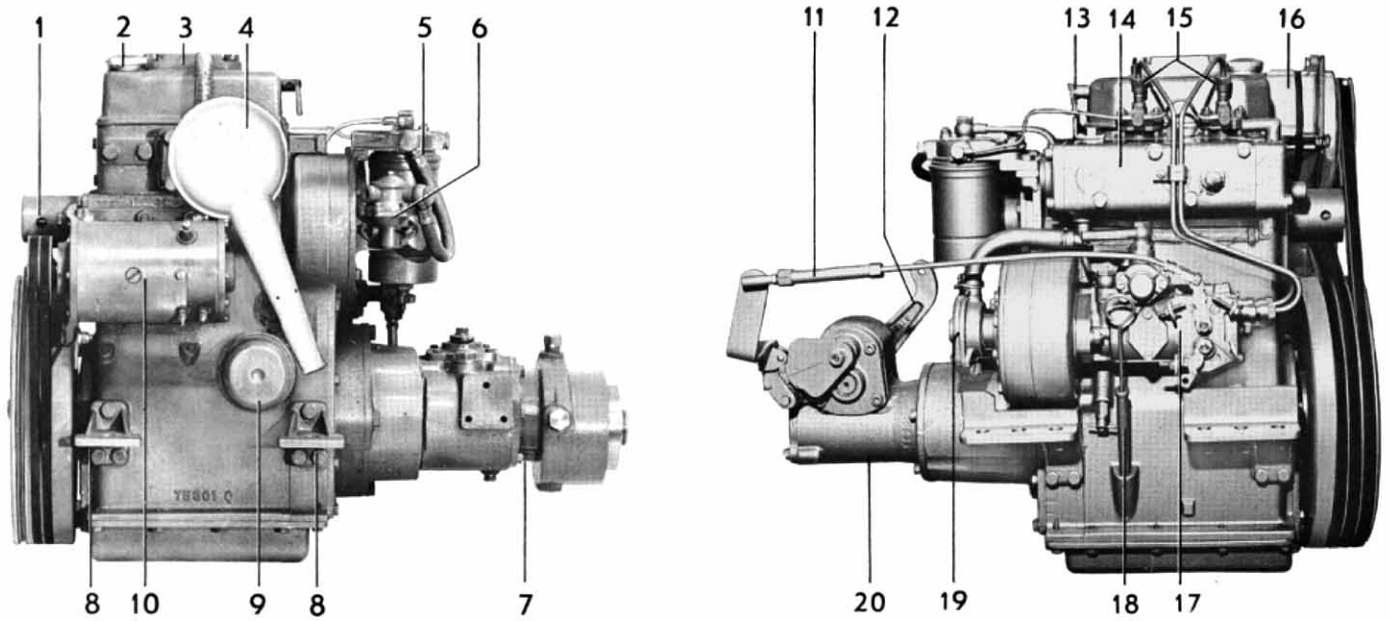
- Injection pump of rotor type with hydraulic governor for particularly accurate speed control.
- Feed pump with hand primer for fuel and with effective fuel filter.
- Automatic cold starting – makes starting easier in cold weather.
- Decompression device and recess for starting crank at front facilitates manual starting.
- Effective lubricating oil filter of the so-called "Spin-on" type – easy to change.
- Thermostat-controlled, sea-water cooling system means that the engine runs at its most favourable operating temperature. Easily accessible sea-water pump with impeller made of neoprene rubber.
- Effective intake silencer and particularly good balancing – gives us an engine with quiet and smooth operation.
- Special, marine type electrical system, complete instrument panel, starter-generator 135 W max. output and 1 h.p. starter motor output. A 12 V – 28 A (450 W) alternator can be fitted as extra equipment.

**Volvo Penta 2-cylinder, 4-stroke
marine diesel engine
with direct injection**

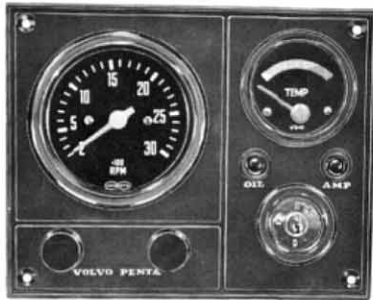
10 h.p.



**VOLVO PENTA MARINE DIESEL ENGINE
TYPE MD 6 A**



- | | | |
|----------------------------------|---|---|
| 1. Recess for starting crank | 8. Engine brackets | 15. Injector |
| 2. Filler cap for oil | 9. Lubricating oil filter | 16. Alternator (extra equipment) |
| 3. Closed crankcase ventilation | 10. Starter-generator | 17. Fuel injection pump |
| 4. Intake silencer | 11. Trottle lever for reversing mechanism | 18. Oil dipstick |
| 5. Fuel filter | 12. Control lever for adjustable propeller device | 19. Sea-water pump |
| 6. Feed pump | 13. Decompression handle | 20. Combi reversing mechanism, ratio 1.42:1 |
| 7. Reverse gear MS, ratio 1.91:1 | 14. Water-cooled exhaust manifold | |



Instrument panel (included as standard)

DATA

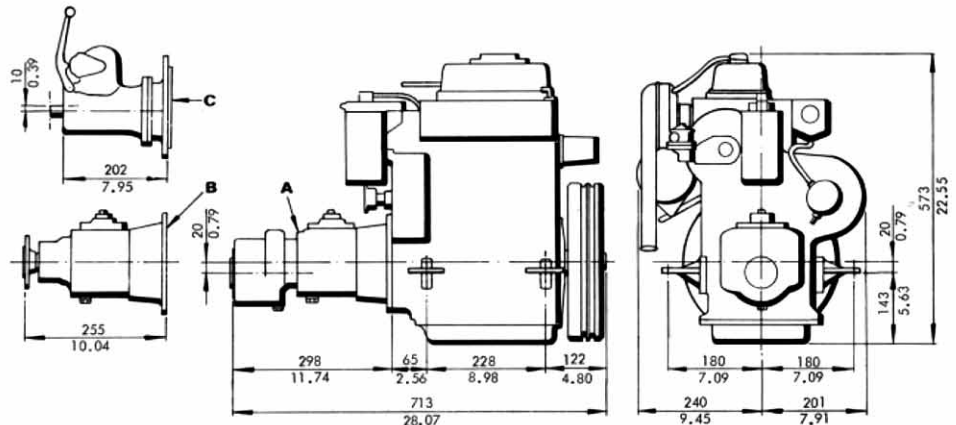
Operation: 4-stroke diesel with direct injection

Continuous output, h.p. (DIN) ¹⁾ at r.p.m.10/2400
Max. torque, kpm (lb.ft.)/r.p.m.	3.1 (22.4)/1900
Number of cylinders	2
Bore, mm (in.)	70.0 (2.75)
Stroke, mm (in.)	82.0 (3.23)
Capacity, cm ³ (cu.in.)	631 (38.5)
Valves	Overhead
Max. inclination while running	15°
Net weight, incl. MS reverse gear, approx. kg (lb.)	160 (355)

1) Output acc. to DIN 6270 Dauerleistung B

DIMENSION DRAWINGS

- Engine with:
- A. Reduction/reverse gear MS, ratio 1.91:1
 - B. Reverse gear MS, ratio 1:1
 - C. Reversing mechanism for adjustable pitch prop, ratio 1.42:1



We reserve the right to carry out modifications.



AB VOLVO PENTA

Box 392, S-401 26 Göteborg 1, Sweden
 Telephone 031/23 54 60
 Telegrams: Penta
 Telex 207 55

7761480 - Hämtad från www.volvopenta.com 2012-03-21 16:23:29